

Data Collection Worksheet

Please Note: The Data Collection Worksheet (DCW) is a tool to aid integration of a PhenX protocol into a study. The PhenX DCW is not designed to be a data collection instrument. Investigators will need to decide the best way to collect data for the PhenX protocol in their study. Variables captured in the DCW, along with variable names and unique PhenX variable identifiers, are included in the PhenX Data Dictionary (DD) files.

Avon Longitudinal Study of Parents and Children (ALSPAC), Growing and Changing, Parent/Son Questionnaire

We would like to assess the stage of your son's physical development using the drawings on the next pages. These show various stages commonly used by doctors to assess the growth and development of boys.

We need to know which drawings most closely match your son's stage of development at the moment.

Not all children follow the same pattern of development. **Just pick the stage that is closest, based on both the picture and the description.**

Boys go through the various stages of physical development at different ages. Some start as early as 6, others not until they are 20. We need your help in letting us know what stage your son is at. **Please look at each of the drawings.** It is also important to read the descriptions.

Cross the box that is closest to your son's current stage

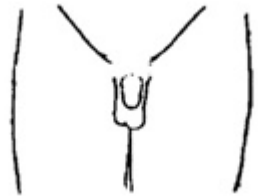


1 []

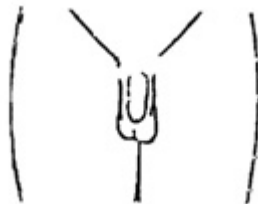
The size and shape of the testes, scrotum (the sac holding the testes) and penis are about the same as when you were younger.



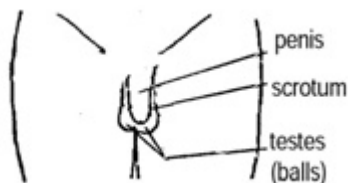
2 [] The penis is a little bit bigger. The scrotum has dropped and the skin of the scrotum has changed. The testes are bigger.



3 [] The penis has grown longer, the testes have grown and dropped lower.



4 [] The penis is longer and wider. The head of the penis is bigger, the scrotum is a darker colour and bigger. The testes are bigger.



5 [] The penis, scrotum and testes are the size and shape of a man's.

As part of development, at some stage hair will start to grow just above the penis.

Please look at each of the drawings. It is also important to read the descriptions.

Cross the box that is **closest** to the amount of pubic hair that you have.



1 [] There is no hair at all.



2 [] There is a little soft, long, lightly coloured hair at the base of the penis. It may be straight or a little curly.



3 [] The hair is darker and more curly. It has spread out and thinly covers a bigger area.



4 [] The hair is as dark and curly as that of a man, but it hasn't spread out to the legs.



5 [] The hair is like that of a man. It has spread out to the legs.

Protocol source: <https://www.phenxtoolkit.org/protocols/view/100104>